

T.I.P. *Current* Connection

T.I.P. Rural Electric Cooperative

September 2025

A Touchstone Energy® Cooperative



Make Time for Safety this Harvest Season

Harvest season often means putting in long hours, which can make it difficult to stay alert and on the lookout for potential hazards.

Safety starts with preparation.

- Be prepared for potential emergencies before the rush of harvest season begins.
- Have a safety plan, and make sure that farm workers and family members are aware of the procedures in it.
- Be sure that you can see well in the areas where you are working. Consider adding extra lighting around grain bins and augers.

Take the time to look up and look out for electrical lines.

Always be aware of where they are in relation to your equipment. Keep a minimum of 10 feet away from all electrical equipment, and lower extensions before moving equipment. If you see a power line that is sagging or low, contact your utility. Also keep an eye out for guy wires. Although these wires are not energized, they can bring down live lines.

In equipment with auto-guidance systems, less focus is needed on steering, which may lead some drivers to think that they do not need to be as aware of navigation issues. However, even while using a GPS with auto-steering, farm workers need to keep safety in mind and stay focused on their surroundings.

Slow down, always stay alert, and take all recommended precautions. To help you do so, recognize when you need to take breaks so that you can be active and engaged in the farm work.

Additional electrical safety tips include:

- Use a spotter when operating large machinery near lines.
- Inspect the height of farm equipment to determine clearance.

- Look up and use care when moving any equipment such as extending augers or raising the bed of grain trucks around power lines.
- Always set extensions to the lowest setting when moving loads to prevent contact with overhead lines. Grain augers should always be positioned horizontally before being moved.
- Never attempt to move a power line out of the way or raise it for clearance.

If the machinery you are operating does make contact with a power line, stay on the equipment. Immediately call 911, warn others to stay away, and wait for the utility crew to cut the power.

Only on the rare occasion that the machinery catches fire should you leave the vehicle after contact is made.

If this is the case, jump off the equipment with your feet together and without touching the ground and machinery at the same time. Then, still keeping your feet together, hop to safety as you leave the area. Never touch anything that is in contact with a power line.

Remember, while harvest is a busy season on the farm, it's still important to take the time to keep safety first and look out for and stay safely away from potential hazards like overhead power lines.

As we celebrate Farm Safety and Health Week this month, September 21-27, please keep this article in mind. T.I.P. REC wants everyone to have a safe and bountiful harvest.

Also, if you would like more information on electrical safety, visit SafeElectricity.org.



A Touchstone Energy® Cooperative



National Preparedness Month



September is National Preparedness Month - a great reminder to take a few simple steps to keep you and your loved ones safe in an emergency.

1. Make a plan. Talk with your family about where you will go and how you will stay in touch during an emergency.
2. Build an emergency supply kit. Gather supplies like water, non-perishable food, flashlights, batteries, medications and first-aid supplies.
3. Stay informed. Sign up for local weather alerts and other important updates.

Being prepared for an emergency is one of the most important ways to ensure your family will be safe.

Shine the Light Contest Nominee Shannon Parker Nominated by Cory Parker



Shannon Parker has been a Dental Assistant for over 20 years and she volunteers for the Iowa Mission of Mercy (IMOM) that she joined through the Iowa Dental Association.

Every year, the Iowa Mission of Mercy sets up a temporary dental clinic in rotating locations in Iowa and sponsors and volunteers like Shannon donate their time, talents and resources to provide free dental care to patients. Oral health is a critical part of a person's overall well-being but unfortunately some people face barriers when it comes to receiving proper dental care.

At this clinic, lives are transformed as licensed dental professionals provide a wide variety of treatments from cleanings to some oral surgeries and everything in between. Since the first IMOM clinic in 2008, more than 18,583 patients from all areas of the state and beyond have received free dental care totaling over \$13.3 million! In 2024, the clinic provided over \$778,000.00 of care to over 847 patients in two days. Over 1,000 volunteers are needed for this clinic.

In 2025, the first-come/first-served basis IMOM clinic will be held in Coralville, Iowa, on September 19 and 20.

T.I.P. REC along with our power supplier, Central Iowa Power Cooperative, who matched our \$200.00 donation, gave Shannon's charity IMOM a donation of \$400.00.

Thank you Shannon for being such an upstanding individual by volunteering your time and talent to help others.



Pictured back left to right: Directors, Gene Von Ahsen, Anne Axmear, James De Smet, Lisa Tichy, Randy Upah and Craig Stallman. Front left to right: CEO/General Manager, Scott Long, Shannon Parker, IMOM volunteer, and Directors, Jerry Henning and Ronald Hoffman.

Enhancing your Security!

Effective October 1, 2025, you will be required to enter a CCV# (located on the BACK of your debit or credit card) when making one-time payments or if you are using a new card to pay your bill.



This provides even more protection when making payments.



Finishing up digging projects this fall? Go to IowaOneCall.com or call 1-800-292-8989 before you dig.

2024 CIPCO Power Supply Report: Member Driven. Reliability Focused.

By Craig Stallman, T.I.P. REC Representative on the CIPCO Board of Directors



The reliable and affordable power we benefit from today is the result of careful planning and prudent investments that occurred decades ago. To be sure, when T.I.P. REC was founded in 1938, the energy landscape looked quite different than it does today. Once in its infancy, our bulk electric system has now matured with the assistance

of diversified power generation sources and improved technology.

As your representative on the Central Iowa Power Cooperative Board of Directors, I am committed to the critical work of continuing the stewardship of your electric service that began all those years ago. Decisions made then, and decisions made now will determine our future path to success. To get there, we need to keep our eyes focused on the horizon.

For that reason, the CIPCO Board of Directors began 2024 by refreshing our strategic plan. Safety and security, reliability, strategic partnerships and financial strength were the pillars upon which we weighed every action we took on behalf of our Member-owner electric cooperatives. We mindfully and conservatively deliberated plans for much-needed new power generation, fortified by the findings of an updated Integrated Resource Plan, which clearly asserted the demand for electricity shows no signs of slowing down. Basically, the sooner we can have new generation up and running, the better.

Rising demand for electricity across our region stems from industrial expansion of manufacturing facilities, data centers, mining cryptocurrency, small businesses and ongoing residential growth and general electrification. While it certainly presents an opportunity, it is not risk-free. Today's complex regulatory environment complicates our business and has threatened the affordability and reliability of the generation we need to serve these large loads. Our ongoing partnership with fellow CIPCO Member-owners to mitigate some of these risks through innovative rates and contract structures has prepared us to welcome new businesses and industries and expand existing ones.

As a CIPCO Board member, I am excited about what the future holds for CIPCO, and T.I.P. REC, as we pursue opportunities to bolster our balanced and diverse portfolio with reliable energy and capacity that will

consistently serve us for decades to come. The planning for the development and construction of new generation assets in 2024 will be remembered as the launch of the latest capacity expansion for CIPCO.

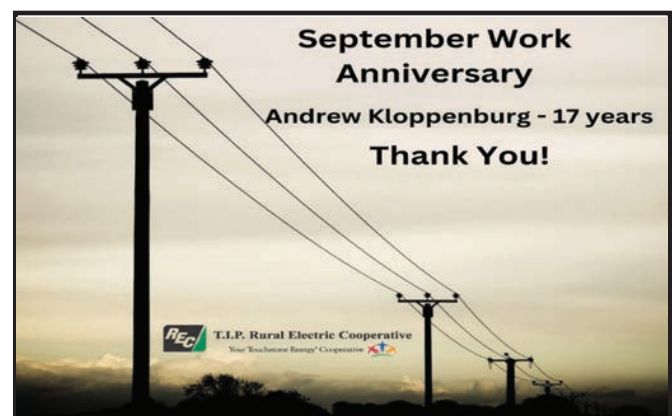
CIPCO's positive financial standing is due to the long-term support of its Member-owners like T.I.P. REC. For 2024, CIPCO realized a net margin of \$30.4 million, well ahead of budget. Throughout the year, CIPCO maintained stable rates, returned patronage capital to our cooperative, and strengthened the balance sheet as we planned for major capital additions.

On the financial side, in 2024, both Standard & Poor's and Fitch Ratings once again maintained CIPCO's 'A' ratings which confirm CIPCO's financial strength. This was echoed in the sound financial practices that allowed margins to be returned to CIPCO Member-owners in the form of patronage, a key component of the cooperative business model. In 2024, CIPCO returned patronage totaling \$586,293 to T.I.P. REC.

CIPCO was created for one reason: to serve its Member-owner cooperatives. Its transmission system remains reliable, and its growing power supply resources enhance the value of membership. We are proud of our accomplishments and remain confident that the path ahead will bring continued reliability and opportunities for your local electric cooperative.

2025 Annual Meeting


Make sure to check out the annual meeting highlights in the October newsletter or on our website: tiprec.com/annual-meeting. There will be reports, prize winners, and results from the election of your Board of Directors.





Your Rural Electric Cooperative has always extended a helping hand to those needing it. Now, in response to actions by the Iowa General Assembly, your REC has established RECare, a program of members helping members. RECare will provide funds to be distributed by local community action agencies to help pay winter heating bills and to assist in weatherization of homes of low-income consumers. You may make a one-time contribution or you may make a monthly pledge. Even a dollar a month pledge will help others! You care, we care, RECare.

T.I.P. Rural Electric Cooperative

A Touchstone Energy® Cooperative 

Fill out, clip on dotted line and return to our office

Yes, I want to be a part of members helping members and contribute to RECare. All RECare contributions must be in the form of a separate check from your utility payment.

_____ I will make a one-time contribution to RECare. My check is enclosed.

_____ I will contribute monthly to RECare. I would like the amount of \$_____ added to my bill for the next 12 months.

Name _____

Account Number _____ County _____

Please return to: RECare
T.I.P. Rural Electric Cooperative
PO Box 534
Brooklyn IA 52211-0534



T.I.P. Rural Electric Cooperative

A Touchstone Energy® Cooperative 

Energy Efficiency Tip of the Month



Take advantage of “shoulder months,” which refer to the transitional periods between peak heating and cooling seasons. During the fall, these milder weeks typically occur between September and November.

Shoulder months offer a great opportunity to reduce home energy consumption as the need for extensive heating and cooling is reduced. Look for simple ways to boost indoor comfort without running your heating and cooling system. Use ceiling fans and open windows on breezy days to ventilate your home. On cooler days, add a layer of clothing and avoid running the heat.

NOTICE: The Brooklyn office will be closed on Wednesday, September 10 from 7:00 am till 1:00 pm for an all-employee safety meeting.

Pay Your Bill by Check, Debit or Credit Card. Log on to www.tiprec.com and Click on the blue Pay Now tab at the top or log into SmartHub or Call 833-619-0894.

Non-Discrimination Statement

“This institution is an equal opportunity provider and employer.”

T.I.P. Current Connection is published monthly for members of T.I.P. Rural Electric Cooperative, 320 Industrial Drive, Brooklyn, Iowa 52211.